

JAM NUT RECEPTACLE

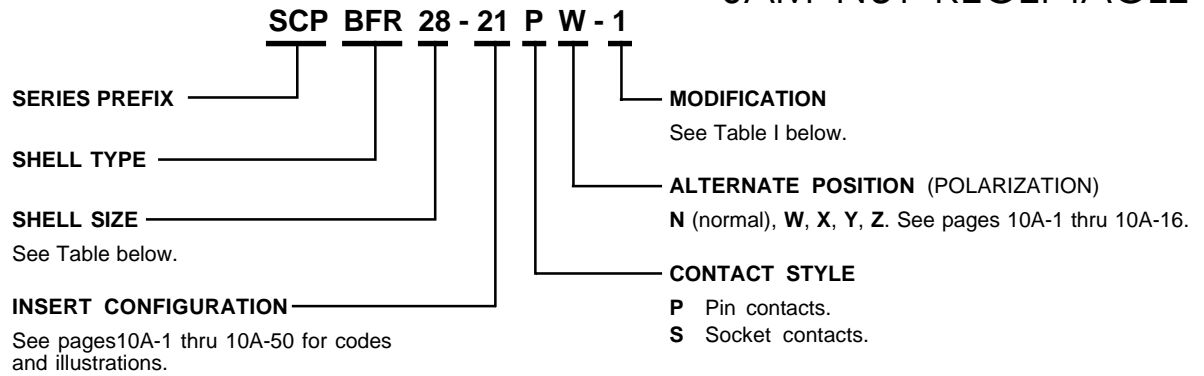
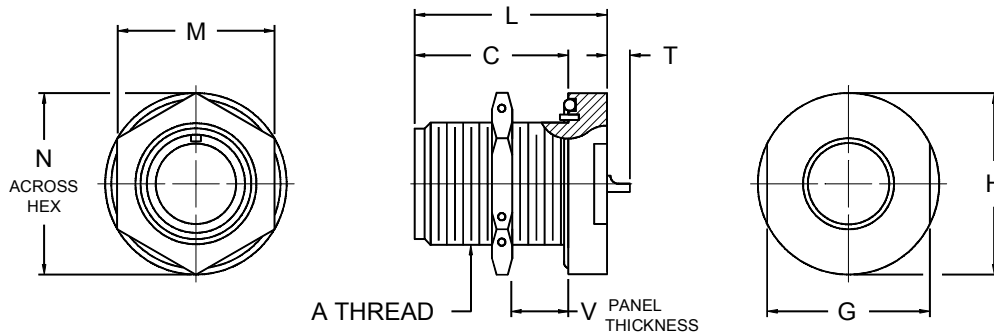


TABLE I. MODIFICATIONS

CODE	DESCRIPTION
-1	Basic part number
-3	Basic shell has 4 holes and no positioning pin
-4	Basic shell, no positioning pin and O-ring is Silicone
-5	Same as -1 except positioning pin is longer.
GE	Hex nut is replaced by spline nut.

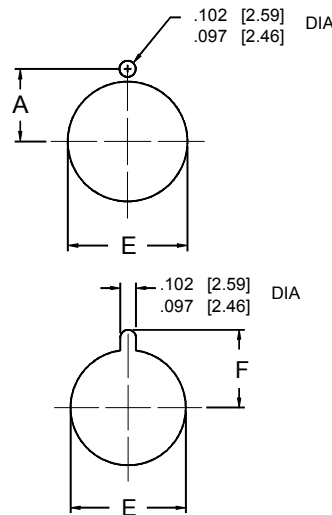


SHELL SIZE	A COUPLING THREAD CLASS 2A	C MAX.	G MAX.	H MAX.	L MAX.	M MAX.	N MAX.	V MAX.
10S	.625-24 UNEF	.853 [21.67]	1.015 [25.78]	1.203 [30.56]	1.087 [27.61]	.822 [20.88]	.960 [24.38]	.250 [6.35]
10SL	.625-24 UNEF	.853 [21.67]	1.015 [25.78]	1.203 [30.56]	1.087 [27.61]	.822 [20.88]	.960 [24.38]	.250 [6.35]
12S	.750-20 UNEF	.853 [21.67]	1.077 [27.36]	1.327 [33.71]	1.087 [27.61]	.955 [24.26]	1.110 [28.19]	.375 [9.52]
12	.750-20 UNEF	1.244 [31.60]	1.077 [27.36]	1.327 [33.71]	1.525 [38.74]	.947 [24.05]	1.110 [28.19]	.375 [9.52]
14S	.875-20 UNEF	.853 [21.67]	1.203 [30.56]	1.453 [36.91]	1.087 [27.61]	1.072 [27.23]	1.250 [31.75]	.375 [9.52]
14	.875-20 UNEF	1.244 [31.60]	1.203 [30.56]	1.453 [36.91]	1.525 [38.74]	1.072 [27.23]	1.250 [31.75]	.375 [9.52]
16S	1.000-20 UNEF	.853 [21.67]	1.327 [33.71]	1.577 [40.06]	1.087 [27.61]	1.265 [32.13]	1.460 [37.08]	.375 [9.52]
16	1.000-20 UNEF	1.244 [31.60]	1.327 [33.71]	1.577 [40.06]	1.525 [38.74]	1.265 [32.13]	1.460 [37.08]	.375 [9.52]
18	1.125-18 UNEF	1.244 [31.60]	1.453 [36.91]	1.703 [43.26]	1.525 [38.74]	1.395 [35.43]	1.610 [40.89]	.375 [9.52]
20	1.250-18 UNEF	1.244 [31.60]	1.577 [40.06]	1.827 [46.41]	1.525 [38.74]	1.515 [38.48]	1.750 [44.45]	.375 [9.52]
22	1.375-18 UNEF	1.244 [31.60]	1.577 [40.06]	1.953 [49.61]	1.525 [38.74]	1.635 [41.53]	1.900 [48.26]	.375 [9.52]
24	1.500-18 UNEF	1.244 [31.60]	1.827 [46.41]	2.077 [52.76]	1.525 [38.74]	1.765 [44.83]	2.030 [51.56]	.375 [9.52]
28	1.750-18 UNS	1.244 [31.60]	1.953 [49.61]	2.327 [59.11]	1.525 [38.74]	2.015 [51.18]	2.330 [59.18]	.375 [9.52]
32	2.000-18 UNS	1.244 [31.60]	2.203 [55.96]	2.577 [65.46]	1.525 [38.74]	2.205 [56.01]	2.550 [64.77]	.375 [9.52]
36	2.250-16 UN	1.244 [31.60]	2.577 [65.46]	2.827 [71.81]	1.525 [38.74]	2.455 [62.36]	2.840 [72.14]	.312 [7.92]

DIMENSIONS IN BRACKETS [] ARE IN MILLIMETERS.

SHELL SIZE	T MAX. SOLDER POT EXT.				
	#16	#12	#8	#4	#0
8S-16S	.140 [3.56]	-	-	-	-
12 THRU 36	.062 [1.57]	.062 [1.57]	.125 [3.18]	.125 [3.18]	.359 [9.12]

MOUNTING DIMENSIONS



SHELL SIZE	A ±.005 [±0.13]	E +.015 -.000 [+0.38] [-0.00]	F ±.005 [±0.13]
8S	.323 [8.20]	.500 [12.70]	.373 [9.47]
10S,10SL	.385 [9.78]	.625 [15.88]	.435 [11.05]
12S,12	.448 [11.38]	.750 [19.05]	.498 [12.65]
14S,14	.510 [12.95]	.875 [22.23]	.560 [14.22]
16S,16	.573 [14.55]	1.000 [25.40]	.623 [15.82]
18	.635 [16.13]	1.125 [28.58]	.685 [17.40]
20	.698 [17.73]	1.250 [31.75]	.748 [19.00]
22	.760 [19.30]	1.375 [34.93]	.810 [20.57]
24	.823 [20.90]	1.500 [38.10]	.873 [22.17]
28	.948 [24.08]	1.750 [44.45]	.998 [25.35]
32	1.073 [27.25]	2.000 [50.80]	1.123 [28.52]
36	1.198 [30.43]	2.250 [57.15]	1.248 [31.70]

SCPBFRX